

Charismatic & Bespoke
KITCHENS & BATHROOMS

belle

URBAN CHIC *Smart Spaces for contemporary living*



GLAMOUR
MISSION

TAMSIN JOHNSON'S TIMELESS ELEGANCE

FULL SPECTRUM



A base of moody materials gets a zap of energy

from art and furniture in eye-popping shades.

This page Facing off in the living room, a pair of sofas from Fred Sternberg, upholstered in Kadon's "Dynamite" leather, mahair in Dark Olive off an "Molokai" rug in Datamed from Armadillo. Owl gotter table and Owl solid black side table in Oregon black satin finish both from Mark Tuckey. Floor Bellini portrait lamp from Larkspur. Apparatus. Serravallo hanging light in Aged Brass from Cividale. Vero "Wright" stool from Space. In the background a Gubi "9602" floor lamp stands next to "GM3" lounge chair, both from In Good Company. Ennis metal side table in yellow zinc-plated steel from Living Edge. Opposite page Soft Reveries artwork by Tom Fava.

The true measure of a space is how it makes you feel, and for interior designer Chelsea Hing, this concept was central to the design of this contemporary family home in regional Victoria. Having been granted free rein when it came to the design of the interiors, it was as Chelsea describes "a masterclass in how a client can facilitate their designer to do their best work". As the build was already well underway when she joined the project, there was little time for indecision. "Trust was essential for this to work well," says Chelsea, "and the owners allowed us to run with our most ambitious ideas which was absolutely fantastic."

To see the project achieve its full potential Chelsea felt she needed to untangle the floor plan, unpicking it here and there to "release" the layout to create, as she explains, "a place for the whole family to come together and feel at ease".

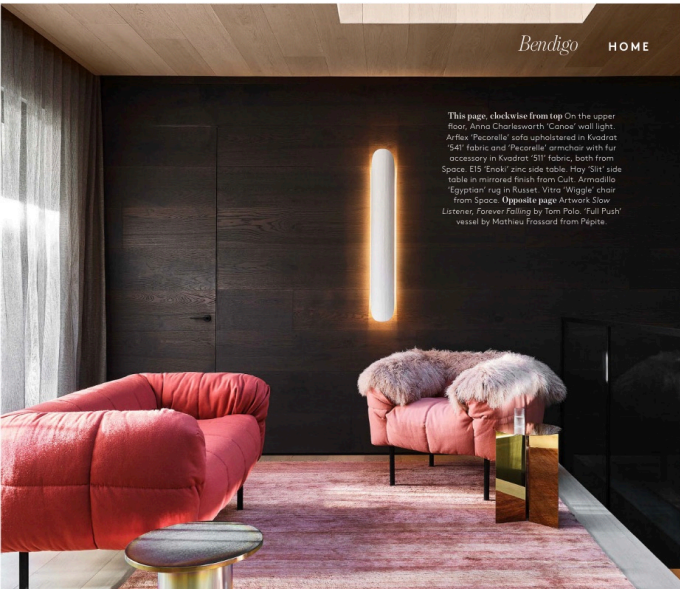
From the front door, it's clear that this is a space where flow is of primary concern to the design. "It was important for us to feel that the spaces flowed beautifully and logically," says Chelsea, "to give a purpose to spaces and to think about how the home is going to be used."

Upon entering, you are greeted by a curved brick wall that wraps around a wing of guest bedrooms created for the owners' adult children when they come to visit and to the left is a retreat for their teenager to enjoy, complete with an ensuite and walk-in-robe.

Connecting these two zones is a dramatic double-height void and sitting room. Initially, the void posed a challenge to Chelsea, who was intent on creating a space that facilitated warmth and connection. >

Bendigo HOME

This page, clockwise from top: On the upper floor, Anna Charlesworth 'Conoa' wall light. Arne Jacobsen 'Pecorelle' sofa upholstered in Kvadrat '541' fabric and 'Pecorelle' armchair with fur accessory in Kvadrat '511' fabric, both from Space. E33 'Cockle' side table, Hay 'Sit' side table in mirrored finish from Culk. Armadillo 'Egyptian' rug in Russet. Vitra 'Wiggler' chair from Space. Mignotte paper Artwork. Slow Listener, Forever Falling by Tom Polo. 'Full Push' vessel by Mathieu Frassard from Pépite.



“Getting this area to feel intimate but expansive was a real test,” says Chelsea. “The way that we responded was to centre a seating group opposite the fire to give a sense of intimacy to the plan.” This area became Chelsea’s favourite part of the project, she says. “It was the trickiest space to plan because it’s essentially a thoroughfare, but is in fact a warm and cosy space to hang out.”

The finishes too play a vital role in creating a point of connection between spaces, and timber was a linchpin in grounding the space and a starting point for the overall design. “We used two timber tones to connect the double height together, wrapping the dark panelling up across both floors. Light-toned oak was used to run across the ceilings and provide a textural element to ground the space,” explains Chelsea. Alcoves for artwork insert layers of interest in the sitting area and introduce jolts of colour to contrast the dark and moody timber joinery.

The sitting area seamlessly transitions to an open-plan living area and kitchen and dining zone with an adjoining butler’s pantry and laundry that connects through to the garage. Despite the home being, as Chelsea describes, “quite inwardly focused due to the location of the windows, aspect and orientation of the site”, this rear living space and kitchen enjoy views to the wraparound garden, outdoor entertaining area and above-ground swimming pool. Here, the home steps into its role as a space to entertain, with a built-in teppanyaki table that has been finished in the same Verde Bardini granite used in the kitchen, once again forging a sense of connection between zones.

Upstairs, in the office and primary bedroom there’s a shift in the mood achieved through lighter joinery finishes and soft furnishings. In the office, a custom-designed desk by Didier anchors the space, in addition to





Bendigo HOME

This page, clockwise from top: In the office, a custom oval Didier 'Cadenet' desk in American oak finished in Dulux 'Melon Twist' is the centrepiece of the room, sitting on an 'Egyptian' rug in Russet from Armodillo. Knoll 'Saddle' chair in Miran from Living Edge. GTV 'Moss' console from Space. Small 'Racco' table lamp from Eurobus. On the table is a Wästberg 'WEE' Pascale 'P' lamp in Oude Red from Eurobus and 'Stack' tray from Studio Henry Wilson. In the powder room, a Walker House console in Aged Brass hangs on a stone wall with custom Watty's 'Kitty Grey' finish from Watty's, contrasting beautifully with Artemis Verde Bardini granite wall panel behind the sink. 'Tropes' freestanding concrete basin in Opale from C&O table bath. In the theatre room, 'Volley' sofa in Torquato leather in Dusk from Jordan. 'The Captain Flint' floor lamp from Eurobus. 'Massproduktion' 'Puddle' black-stained oak coffee table. Don't hesitate, my mum tells me on the phone. I take a walking tour, my looking up a hill directly into the golden light artwork by Ryan Hoffmann. Opposite page Arca 'Castro' lip mirror from Bellecraft. 'Untitled 07' (Tapestry Painting) artwork by Gregory Hojda. Falcone 'Tobacco' floor lamp in Black from Space.

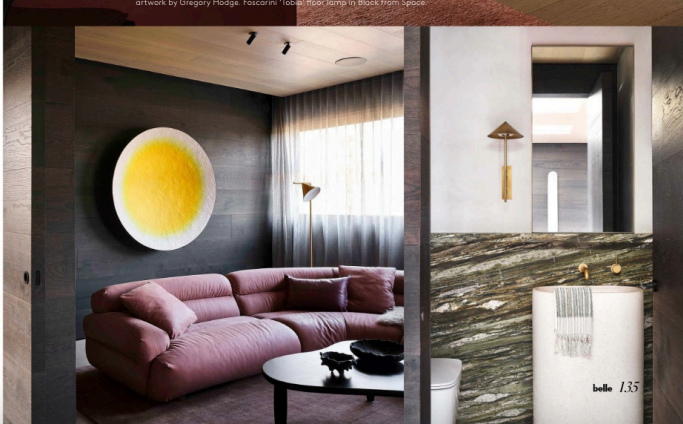


This page An Anna Charlesworth 'Pappadum' sconce brings a glow to the main bedroom. GTV 'Moss' side table from Space. Daniel Boddam 'Wave' bed upholstered in 'Eternal' linen from Mokum. Bedouin Societe bedlinen in 'Fick'. 'Egyptian' rug in Aegean from Armodillo. In the walk-in robe, a 'Sovannah' rug in Dust from Armodillo complements the Lignappi timber joinery in White Wash Oak. Looking through to the ensuite, a 'Cance' wall light by Anna Charlesworth hangs above Ligne Roset 'Estend' clothes stand in Walnut and Brass from Dome. Opposite page in the primary ensuite, Fogariele's 'Craybrook Ocot' 1500' bath in White from Winning Appliances. Icon floor-mounted brass bath mixer in from Astra Walker.

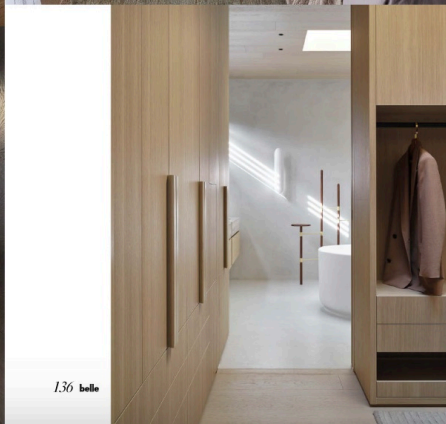
5 SIGNATURE STYLE KEY PIECES



1 Arflex 'Arcolor' coffee table with Carrara marble top and lacquered base in Bardeux, \$7885, from Space. 2 'Blyden' commercial pull-out mixer tap in Brushed Brass, \$550, from ABI Interiors. 3 Easton 'Burton' table lamp in Berry/Burgundy, \$220, from GlobeWest. 4 Linen sheet and pillowcase set in Dusk, \$490/Queen, from Cultiver. 5 Flaxform 'Tessa' ottoman, from \$8150, from Fanuli.



belle 135



136 belle

« Dulux 'Melon Twist' finish, making the perfect accompaniment to a buoyant painting by Gregory Hodge. The primary bedroom, walk-in-robe and ensuite again divert from the bold and masculine energy of their downstairs counterparts. "Comfort in all things is key," says Chelsea, "and neutrals in the bedroom zones promote comfort and relaxation."

Across the hall, a theatre room and covered outdoor balcony, complete with a projector, encapsulates the owner's desire for a family home that could also expand to a space for hosting friends and extended family. "It was important that the house has an intimacy, but also an extroverted nature when it needs to switch into entertaining mode," says Chelsea.

The success of the design lies in its ability to switch from a space that fosters connection and relaxation to a space that can entertain and accommodate guests. For the owners, Chelsea perfectly executed their brief. "We wanted a home that would support and scaffold our family to live, work, play and thrive – in the good times and times of additional demands," they explain. "Chelsea really connected with what 'our best life' was going to look and feel like." chelseabing.com.au, [@chelsea_bing](https://www.instagram.com/chelsea_bing), blrconstruction.com, simonrosalandscape.com, madebystorey.co

